

DIN 6926

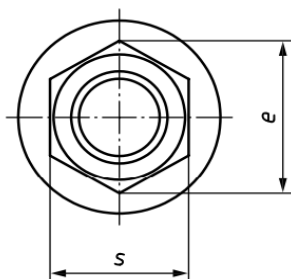
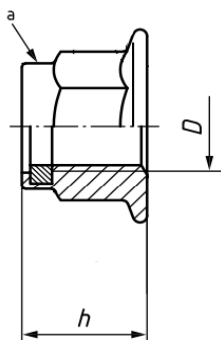
Dado esagonale autofrenante con flangia e inserto non metallico

Prevailing torque type hexagon nut, with flange and with non-metallic insert

Disponibile/Available

A2 

A4 



| | M5 | M6 | M8 | M10 | M12 | M14 | M16 | M20 | |
|---------------|-------------|-------|------------|----------------|----------------|---------------|---------------|---------------|-------|
| Thread size D | ---- | ---- | M 8 x 1 | M 10 x 1 | M 12 x 1,5 | M 14 x 1,5 | M 16 x 1,5 | M 20 x 1,5 | |
| | ---- | ---- | ---- | M 10 x 1,25 | M 12 x 1,25 | ---- | ---- | ---- | |
| $P^{1)}$ | 0,8 | 1 | 1,25 | 1,5 | 1,75 | 2 | 2 | 2,5 | |
| e min. | 8,79 | 11,05 | 14,38 | 16,64 | 20,03 | 23,36 | 26,75 | 32,95 | |
| h | max. | 7,1 | 9,1 | 11,1 | 13,5 | 16,1 | 18,2 | 20,3 | 24,8 |
| | min. | 6,74 | 8,74 | 10,67 | 13,07 | 15,67 | 17,68 | 19,46 | 23,96 |
| m min. | 3,2 | 4 | 5,5 | 6,5 | 8 | 9,5 | 10,5 | 14 | |
| s | max. = nom. | 8 | 10 | 13 | 15 | 18 | 21 | 24 | 30 |
| | min. | 7,78 | 9,78 | 12,73 | 14,73 | 17,73 | 20,67 | 23,67 | 29,16 |

Il diametro M14 è da evitare se possibile

The size M14 should be avoided, if possible

$P^{1)}$ è il passo del filetto

$P^{1)}$ is the pitch of the thread.

last edit 11/10/2019

DRAWING N. 1121